



The LintelTrust
38 York Place
EDINBURGH
EH1 3HU

Tel: 0131 473 6240
email: enquiries@linteltrust.org.uk
web: <http://www.linteltrust.org.uk>

Patron

Professor R McCrone

Trustees

Andrew Robertson (Convenor)
Neil Hall (Treasurer)
Robert McDowall
David Chalmers
Kate Dewar
Alan West
Eileen Shand
Lynn Carr
Dinesh Joshi
Isabel Moore
John Kernahan
David Orr (ex officio by virtue of his position as Director
of Scottish Federation of Housing Associations)

Staff

Karen Jackson Director (until Feb 2005)
Peter Sharma Development Officer

Scottish charity no: SC006002

Link is proud to sponsor this Annual Review

Link provides a range of housing, property management and support services to over 7,000 customers in 22 Scottish local authority areas.

Link Group Ltd 45 Albany Street Edinburgh EH1 3QY
T: 0131 5570350 F: 0131 5562524 www.linkhousing.co.uk

Annual Review

2004 - 2005



THE LINTELTRUST

Convener's Report

It gives me pleasure to report a further year's progress in the development of the LintelTrust.

Karen Jackson, our Director, has taken forward the Mainstreaming Equalities Programme and we are particularly appreciative of the support which we have received for this from our principal sponsors - Communities Scotland, Glasgow Housing Association and Comino PLC, as well as from the significant number of housing associations which have contributed.

During the year, excellent progress was also made with our Older Persons' Programme funded largely by the Henry Smith Charity. With this much appreciated funding, the LintelTrust has been able to assist a number of initiatives which are highlighted in this Review.

The multiple tasks of taking forward such ambitious programmes while maintaining Small Grant Giving, has highlighted the increasing obligations being placed on LintelTrust staff. A Consultancy Report led the Trustees to conclude that if the LintelTrust was to do justice to its Mission Statement then it should recognise that a full time appointment was essential.

While the Trustees were reaching this conclusion both our part-time staff, Karen and our Development Officer Peter Sharma, moved on to new challenges with other organisations. Karen and Peter have both made magnificent contributions to the work of the Trust and my thanks, on behalf of the Trustees and beneficiaries of the Trust, go to them.

In recent months, Sandra Smith has acted as Director to maintain the momentum as we undertook the process to recruit a full time Director. I am very happy to report that the Trustees have been extremely fortunate to recruit Pauline Barbour, currently Policy & Practice Officer with the Scottish Federation of Housing Associations and well known within the housing association movement. Pauline will take up her post at the beginning of October and we greatly look forward to seeing her build on the achievements of earlier Directors as we forge closer links within the movement and engage with potential corporate sponsors.

Finally, a word to my fellow Trustees. They have been brilliant in supporting the Trust through a difficult period and I owe a deep debt of personal gratitude to each and every one of them.

Andrew Robertson



LintelTrust is the only charitable trust in Scotland to specifically focus on housing and housing related projects. We aim to:

- **challenge the inequalities faced by people with disabilities and those from black and minority ethnic groups**

- **enable individuals, particularly older people, to live as independently as possible and play an active part in their community**

- **develop and disseminate good practice**

To achieve this, the LintelTrust raises funds from charitable organisations, sponsors and supporters.

Financial Summary

Income

Donations	£ 76,2240
Covenanted income	673
Investment income	1,844
Organised events	23,387
Total	£ 102,144

Expenditure

Charitable expenditure	£ 95,056
Management and administration	7,856
Fundraising and publicity	12,379
Total	£ 115,291

Net Movement in funds(£ 13,147)

Full audited accounts are available on request

Thank you

Many thanks to everyone who supported LintelTrust during the year. All contributions are greatly appreciated although we can only list here those who donated £200 or more.

Housing Associations

Castlehill HA
Cube HA
Fairfield HC
Fife Special HA
Glasgow HA
Govanhill HA
Horizon HA
Key HA
Langstane HA
Ore Valley HA

Charitable Trusts

Alexander Moncur Trust
Dr Robert Mairs Trust
Henry Smith Charity
J & J Wilson Charitable Trust
Tay Charitable Trust

Corporate

Comino Plc
Communities Scotland
Cruden Foundation
Deale & Henderson
NHBC Scotland
Skye & Lochalsh Access Panel

We are also very grateful to:

- our Housing Association Funding Partners, Albyn, Bield, Cairn, Eildon, Elderpark, Fife Special, Key, Kingdom and the Link Group for their continued support
- all those organisations who sponsored events, prizes and our wall planner
- individuals who helped with the events programme and made personal donations
- LInkGroup for sponsoring this Annual Review and DTZ Pieda and Queens Cross HA for sponsoring the Annual Launch
- all other supporters we have been unable to list.



Making things fun!



Once again, a large number of people had fun raising funds for LintelTrust through our ever popular events programme. Thanks go to our sponsors and all those who took part.

In the coming year we would like to extend our programme to include different types of fundraising activities. Ideas appreciated and volunteers especially welcome!



Making an impact!

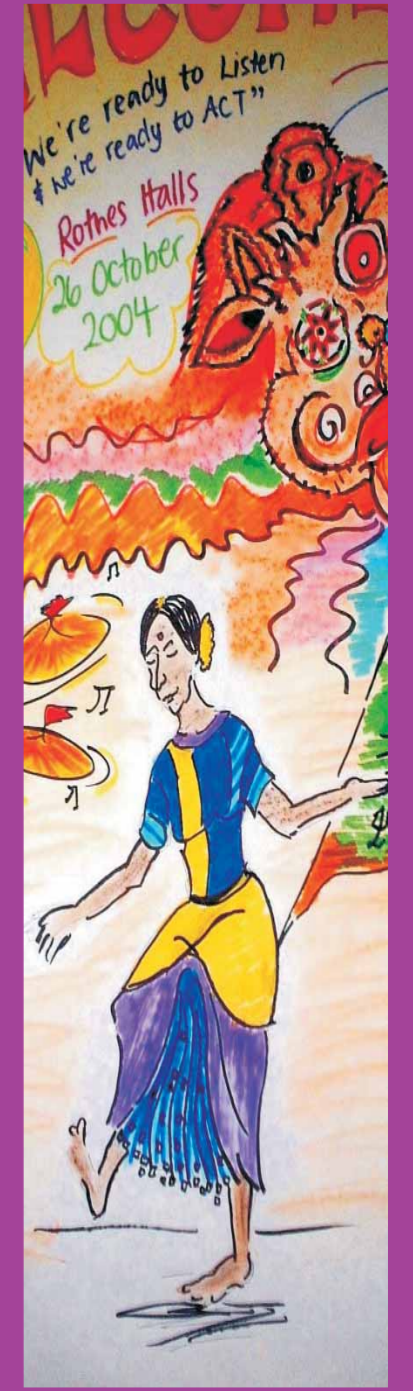
Finding new but practical solutions to the inequalities faced by disabled people and those from black and ethnic minority groups is one of our major programmes.

It is having notable success:

- A new on-line database is being developed which will make it easier for disabled people to find suitable accommodation and for housing providers to let adapted properties. The Centre for Independent Living in Glasgow is setting up the pilot project in response to more than 900 enquiries about adapted housing. Once established, similar services can hopefully become available throughout Scotland.
- Another initiative is helping refugees and asylum seekers in Edinburgh. Ark Trust has used a grant from LintelTrust to employ a part-time worker who has recruited volunteers to provide one-to-one support to help people find housing and retain their tenancies. Involvement in community activities and organisations is also encouraged and the success of the project is such that some refugees have now become volunteers themselves.
- The "Building Links" project at PAiH (Positive Action in Housing) was set up in March 2005 to involve people from black and minority ethnic communities in developing new solutions to their housing problems. Support from LintelTrust has allowed a part-time time worker to be appointed. Already, she is promoting the project and encouraging BME groups to register with the Scottish Ethnic Minorities Directory.

As well as supporting these projects, LintelTrust has invested a considerable amount of staff time in promoting our equalities programme. Meetings have taken place with twenty five housing associations and group presentations have been given to housing, voluntary sector and public organisations in different parts of the country.

LintelTrust will continue to build on this work in the coming years.



Making things better!

Our grant programme for older people is also highly successful:

- In Sutherland, consultation with older people about what they need in order to live independently in their own homes has resulted in new services being introduced. The handy person service which was set up completed an impressive 546 jobs in its first five months; now a publication on housing options for people with a community care need is in the pipeline. The North West Sutherland Forum manages this project which is grant aided by the LintelTrust
- Outreach services for older people, especially those with dementia, are being developed by Borders Independent Advocacy Service with a part-time worker funded by the LintelTrust. A team of volunteer advocates has been trained, there have been several information days to publicise the new service, and action taken to promote pension credits, fuel efficiency and security at home.
- At Milan, in Edinburgh, a project to prevent homelessness and tackle poor housing conditions for older people from Indian, Pakistani, Bangladeshi and Mauritian communities is underway. With grant from the LintelTrust, a part-time worker has been employed to work on housing issues. She has already helped 17 people find and settle into new homes and is teaching computer skills to other older people so they can apply for housing on-line.
- At Abbeyfield Ballachulish, there are plans to develop an imaginative Lunch Club Plus. Abbeyfield Ballachullish is a flagship project which provides sheltered and residential accommodation alongside day care services. A grant from LintelTrust is intended to allow services to be extended to people living in their own homes to allow them to enjoy their independence for longer.

These projects are part of a three year national programme we have developed in partnership with **hact**, the housing association charitable trust.

Independent evaluation of the projects means the lessons learned will contribute to developing good practice which can be adopted by other organisations throughout the country. During the year, representatives from Scotland took part in evaluation workshops and, in March, attended the "Innovation in Older People's Housing" conference in London.



Making a difference!

A small amount of money can often go a long way and through our small grants programme 10 projects have been able to make a difference in their community.

With £2000:

- LintelTrust sponsored 5 places for tenants at the SFHA conference

With £1500:

- The Triangle Club at Shettleston in Glasgow provided transport for frail elderly people to attend its activities

With £1000 or less:

- Hillhead Initiative for Tenants in Kirkintilloch was able to make good use of its community flat and send delegates to the TPAS conference
- DPHS (Aberdeen City) developed an advice pack for people with disabilities
- Deaf Blind Society Scotland provided training for 3 people
- Inverclyde Care & Repair purchased 10 heaters for use by older people

With £500 or less:

- Hyndland Seniors Forum organised social and physical activities for people aged over 80
- Acredale House bought a garden shed for older people entering Bathgate in Bloom
- Clydebank Women's Aid trained new volunteers
- Dunoon & Cowal Elderly Forum campaigned for better conditions for older people